

PROGRAMME | THEMATIC WORKSHOP

8 NOVEMBER 2023

Palais du Rhin, 2 place de la République, **Strasbourg, France** / Online (via TEAMS)

PRICE FORMATION MODELS IN INLAND NAVIGATION FREIGHT TRANSPORT: EVOLUTION AND IMPACT OF FUTURE TRENDS

In partnership with the European Commission, the Central Commission for the Navigation of the Rhine (CCNR) carries out **regular market observation reports** about the development of inland navigation transport in Europe. Its publications consist of annual, semestrial and thematic reports. In the context of its market observation activities, the CCNR also organises **thematic workshops**.

In this context, the CCNR is organising a thematic workshop on the topic “**Price formation in inland waterway transport**” on **8 November 2023**.

The objective of this workshop will be to **identify the different schemes of price formation** in inland navigation freight transport, their evolution over time and the possible trends that might affect such schemes in the future (low waters, energy transition).

For this purpose, the workshop will **address the different factors influencing price formation** (market structure, type of contracting, acquisition of contracts, competition setting, market segment and geographical area concerned).

Information about price formation in other transport modes will also be shared.

The views of a **wide range of actors** will be sought: inland vessel operators, shippers, multimodal operators, freight forwarders, brokers, cooperatives, banks, institutes publishing information about freight rates, ports...

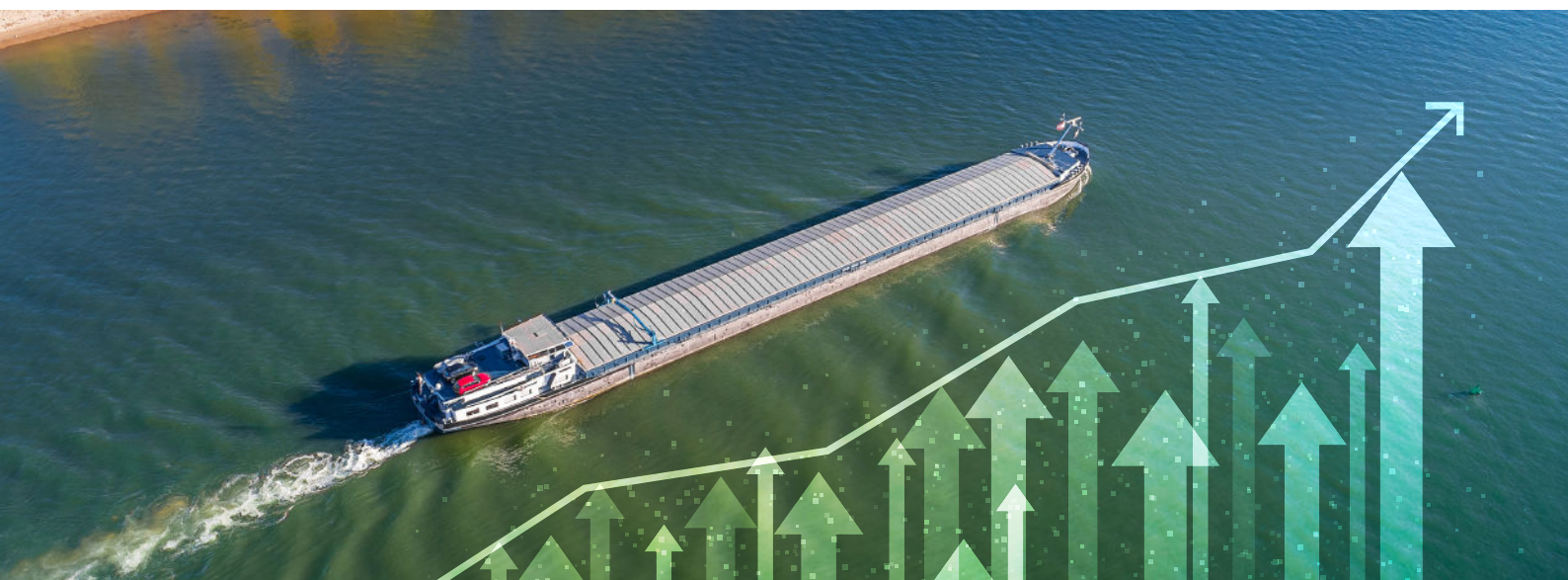
The workshop will be held in **English**, in a **hybrid format** (physical and online participation via TEAMS possible).

The number of places on site being limited, you need to preregister using the following online form:

<https://ec.europa.eu/eusurvey/runner/CCNRworkshoppriceformation2023>

There is no limitation with regards to online participation.

Please respond to the invitation **before 27 October 2023**.



Price formation models in inland navigation freight transport:

Evolution and impact of future trends

8:30 *Registration*

9:15 **Welcome address**

Hugues van Honacker, Senior expert inland waterway transport, DG MOVE, European Commission
Lucia Luijten, Secretary general, CCNR Secretariat

9:25 **Setting the scene: market structure and price formation in the inland waterway transport sector**
Presentation and Q&A

Norbert Kriedel, Administrator market observation, CCNR Secretariat
Laure Roux, Administrator economic affairs, CCNR Secretariat

9:55 **Price formation and its characteristics in the IWT dry bulk transport segment**
Presentation and Q&A

Arno Treur, CFO, NPRC

10:30 *Coffee break*

11:00 **Price formation and its characteristics in the IWT liquid bulk transport segment**
Presentation and Q&A

Patrick Kulsen, Chief executive officer, Insights Global

11:30 **Price formation in container transport**
Presentation and Q&A

Johan Gemels, Director, Novandi

12:00 **Interactive Q&A session**

12:30 *Lunch break*

14:00 **The impact of price formation on the choice of a transport mode and the impact of shippers' practice on price formation**
Presentation and Q&A

Godfried Smit, Secretary general, ESC (European Shippers' Council)

14:30 **Roundtable discussion**

To which extent does the price formation model in inland navigation freight transport plays against or in favour of modal shift?

Maik Bastian, General manager division intermodal, Haeger and Schmidt
Peter Maat, Account manager shipping, Rabobank
Daisy Rycquart, Director, CITBO (Corporation Inland Tanker Barge Owners)
Arno Treur, CFO, NPRC
Herfried Leitner, Managing director, TTS

15:45 **Interactive Q&A session**

16:15 **Conclusions**

16:30 *End of the meeting*